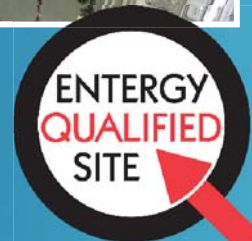
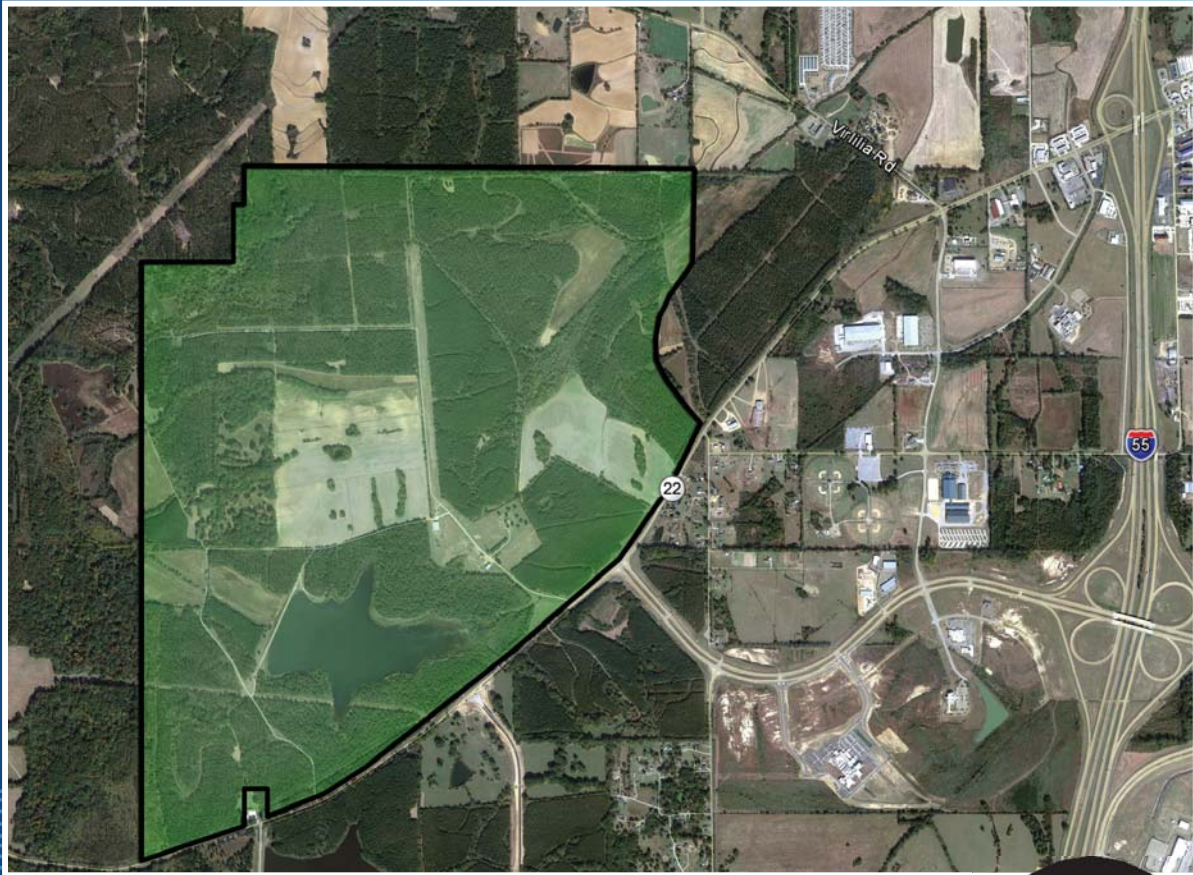


Panther Creek Mega Site

Madison County, Mississippi

High Potential Site

Entergy Mississippi, Inc.



This Qualified Site is ready for development!

- CONTROL OF LAND ✓
- SITE ASSESSMENTS ✓
- TRANSPORTATION INFRASTRUCTURE IMPROVEMENTS ✓
- UTILITY INFRASTRUCTURE IMPROVEMENTS ✓
- ANNEXATION & ZONING ✓
- DETAILED DEVELOPMENT PLAN ✓



MississippiSiteSelection.com

CONTACT:
Taurus Wright 601-969-2349 twright3@entergy.com
Brent Barfield 601-969-2353 jbarfie@entergy.com

Panther Creek Mega Site

Madison County, Mississippi

High Potential Site

Entergy Mississippi, Inc.

Profile

The Panther Creek Mega Site is located in Central Mississippi just 20 miles north of Jackson. Sites are available up to contiguous 600 acres and the area enjoys some of the lowest property taxes in the Southeastern U.S.

This Entergy Mississippi Qualified Site is ready for development!

Labor

Population*

April 2012 Estimate . . . 769,656

Civilian Labor Force*

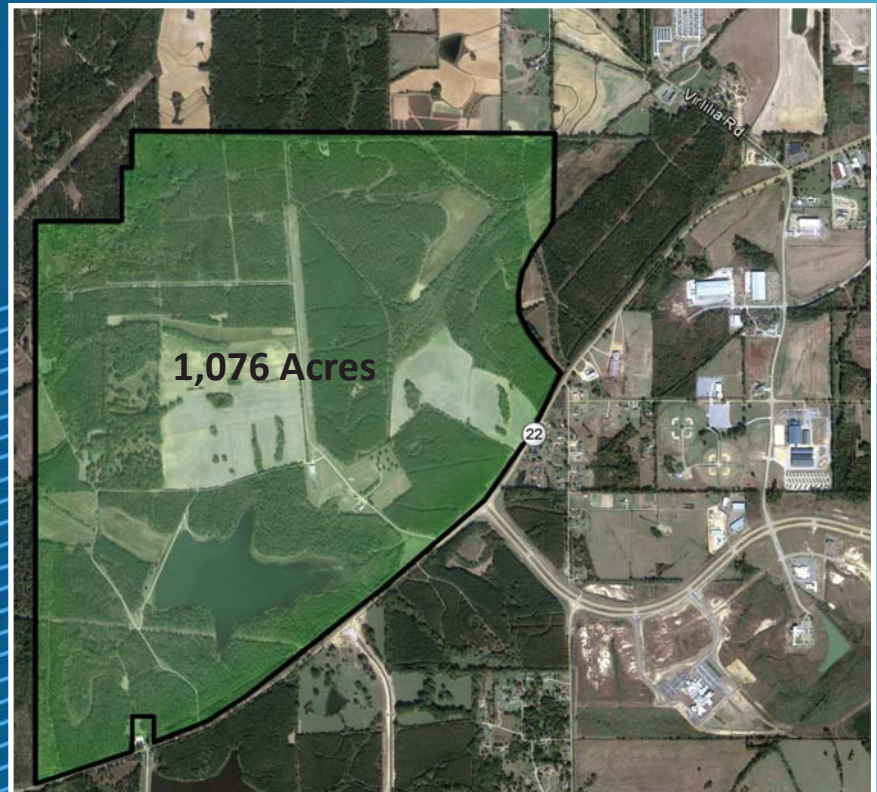
April 2012 Estimate . . . 331,444

Unemployment Rate*

April 2012 Estimate 9%

*Source: Synergos Technologies, Inc.

60 mi. radius



Location Advantages

METRO PROXIMITY:

The Panther Creek Mega Site has the benefit of the Metro Jackson area labor force within a 20 mile radius. The quality of life, adaptable economy and infrastructure all support a high growth environment.

TRANSPORTATION:

The site is located within 35 miles of the Jackson-Medger Wiley Evers International Airport. The Port of Vicksburg is located within one hour of site. The property is less than two miles from Interstate 55 and has direct access from Highway 22 and Nissan Parkway.

REGIONAL GROWTH:

With the third highest population growth in the state, Madison County leads the state in average per capita personal income. The location of Nissan North America in Canton has led to a flourishing supplier network of more than 47 companies in Madison County.

TOPOGRAPHY:

The site's topography offers less development cost per acre and extreme land shape flexibility for a business' initial market entry.



CONTACT:

Taurus Wright 601-969-2349 twright3@entergy.com
Brent Barfield 601-969-2353 jbarfie@entergy.com