



MADISON COUNTY MISSISSIPPI

UNITED FOR PROGRESS



MADISON COUNTY MISSISSIPPI

UNITED FOR PROGRESS

Madison County Board of Supervisors

City of Canton

City of Flora

City of Madison

City of Ridgeland

Madison County Economic Development Authority

Madison County Business League

Madison County Foundation

The Madison County delegation is the voice of numerous entities working toward a clear and concise message for the future of Madison County. We are committed to moving Madison County forward through intelligent planning, while appreciating, and preserving Mississippi's rich heritage. This organization, which is comprised of elected, appointed, business and individual leaders of Madison County, will enable all partners in business and economic development to participate collectively in bringing together the overall vision for Madison County.

What is it about Madison County that's made it one of the South's most desirable locations?

Maybe it's the fact that, in Madison County, you can have everything—without giving up anything. We offer a stable, decidedly pro-business climate and a hardworking, educated workforce that understands and appreciates the value of a good job. The cost of doing business in Madison County is among the lowest in the U.S. And we're centrally located in one of the fastest-growing regions of the United States with close proximity to key U.S. markets and also fast-growing Central and South American economies.

These facts usually don't come as a surprise. However, site consultants and business executives are generally amazed at the outstanding quality of life we enjoy here. Few places in America can offer our high standard of living at such an affordable cost. Housing options include everything from waterfront executive homes to master-planned communities developed in the new urbanism tradition to quaint neighborhoods with tree-lined streets and friendly neighbors.

Madison County is also home to regionally recognized shopping centers and locally owned boutiques, outstanding restaurants featuring unique local and international flavors, and numerous entertainment and cultural opportunities, both locally and in the metro Jackson area. Recreation opportunities are plentiful, too, with the Ross Barnett Reservoir, the Natchez Trace, and the county's extensive system of paved biking and walking trails.

It's no wonder Madison County is one of the state's fastest-growing counties and a growing destination for business—from global businesses like Nissan North America, in Canton, to homegrown success stories like Bomgar and Diversified Technologies Inc.

When it comes down to it, there's really no better place to locate a business than Madison County, Mississippi.

Projects Funded

Completed, Under Construction & In Pre-Construction

page 1

Transportation

Colony Park Boulevard I-55 Connector Road

page 3

Madison Avenue Connector Road Project

page 5

Lake Harbour Drive Extension

page 7

Reunion Interchange

page 9

Hoy Road Improvements

page 11

Flora Truck Route

page 13

Recreation

Northeast Madison County Recreational Park

page 15

Highway 22 Shared Use Trail System

page 17

Economic Development

Madison County Incubator System

page 19

Utilities

West Madison Utility District - Water Improvements

page 21

West Madison Utility District - Sewer Improvements

page 23

Projects Funded

Projects Funded:

Completed, Under Construction & in Pre-Construction

- 1) Project funded and completed with Washington delegation assistance:
Madison County Wastewater Authority – Beattie’s Bluff Wastewater Treatment Facility
and connecting infrastructure
- 2) Project funded and under construction with Washington delegation assistance:
Highway 43 Connector Road.
- 3) Project funded and in pre-construction phase with Washington delegation assistance:
Interstate 55 Interchange at Gluckstadt.





Transportation

Colony Park Boulevard I-55 Connector Road

Cities of Ridgeland & Madison, Madison County, Districts 3 & 2, Supervisors Steen & Lott

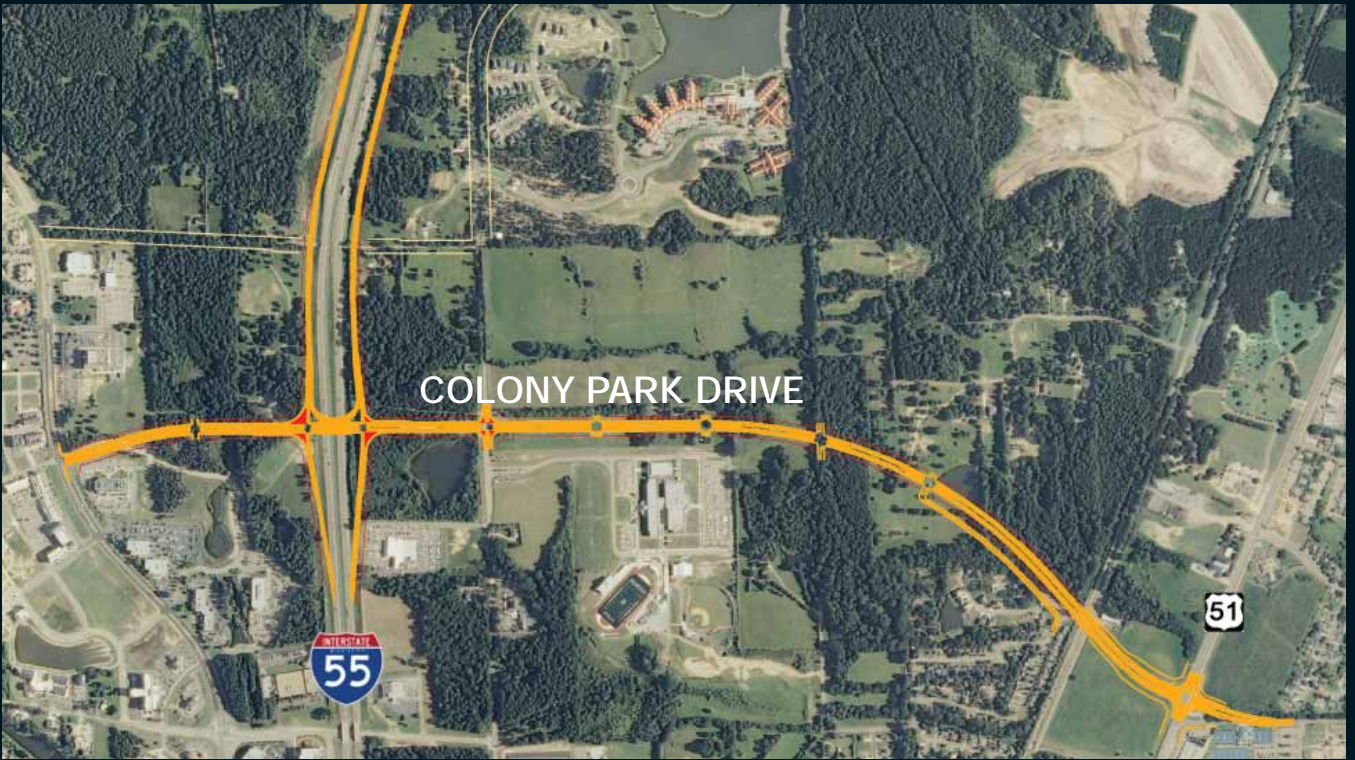
OVERVIEW: This transportation project includes the necessary right-of-way acquisition of and construction for the new Colony Park Boulevard, Ridgeland's primary I-55 connector to the new split diamond interchange.

PROBLEM: The new split diamond interchange project does not provide for a complete east-west corridor interconnection to Highway 51 in Ridgeland. Traffic volumes are ever increasing and need to be controlled.

SOLUTION AND PROJECT BENEFITS: The new Colony Park Boulevard Connector road will provide an east/west connection, ease traffic congestion in Ridgeland and Madison, and improve accessibility from I-55 to traffic generators within both cities.

NEED: Purchase of right-of-way and matching funds for the construction of a four lane east/west road extending from where the new interchange terminates at Sunnybrook Rd. easterly to Hwy. 51 at McClelland Drive.

FUNDING REQUESTED: The Board of Supervisors is respectfully requesting assistance to secure funding for the new Colony Park Boulevard Interstate 55 Connector Road project in the amount of \$11.26 million dollars.





Transportation

Madison Avenue Connector Road Project

Cities of Madison & Ridgeland, Madison County, Districts 2 & 3, Supervisors Lott & Steen

OVERVIEW: This transportation project includes the necessary right-of-way acquisition of and construction improvements for Madison Avenue, Madison's primary I-55 connector to the new split diamond interchange.

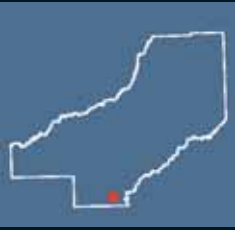
PROBLEM: The new split diamond interchange project does not provide for a complete east-west corridor interconnection to Highway 51 in Madison. Traffic volumes are ever increasing and need to be controlled.

SOLUTION AND PROJECT BENEFITS: The Madison Avenue project provides the east/west capacity needed to ease congestion in Ridgeland and Madison, and improve accessibility from I-55 to traffic generators within both cities.

NEED: Purchase right-of-way and secure matching funds for the construction of additional traffic lanes and improvements for Madison Avenue extending from the interchange termination point to Highway 51.

FUNDING REQUESTED: The Board of Supervisors is respectfully requesting assistance to secure funding for the Madison Avenue Interstate 55 Connector Road project in the amount of \$12.34 million dollars.





Transportation

Lake Harbour Drive Extension

City of Ridgeland & Madison County, District 3, Supervisor Steen

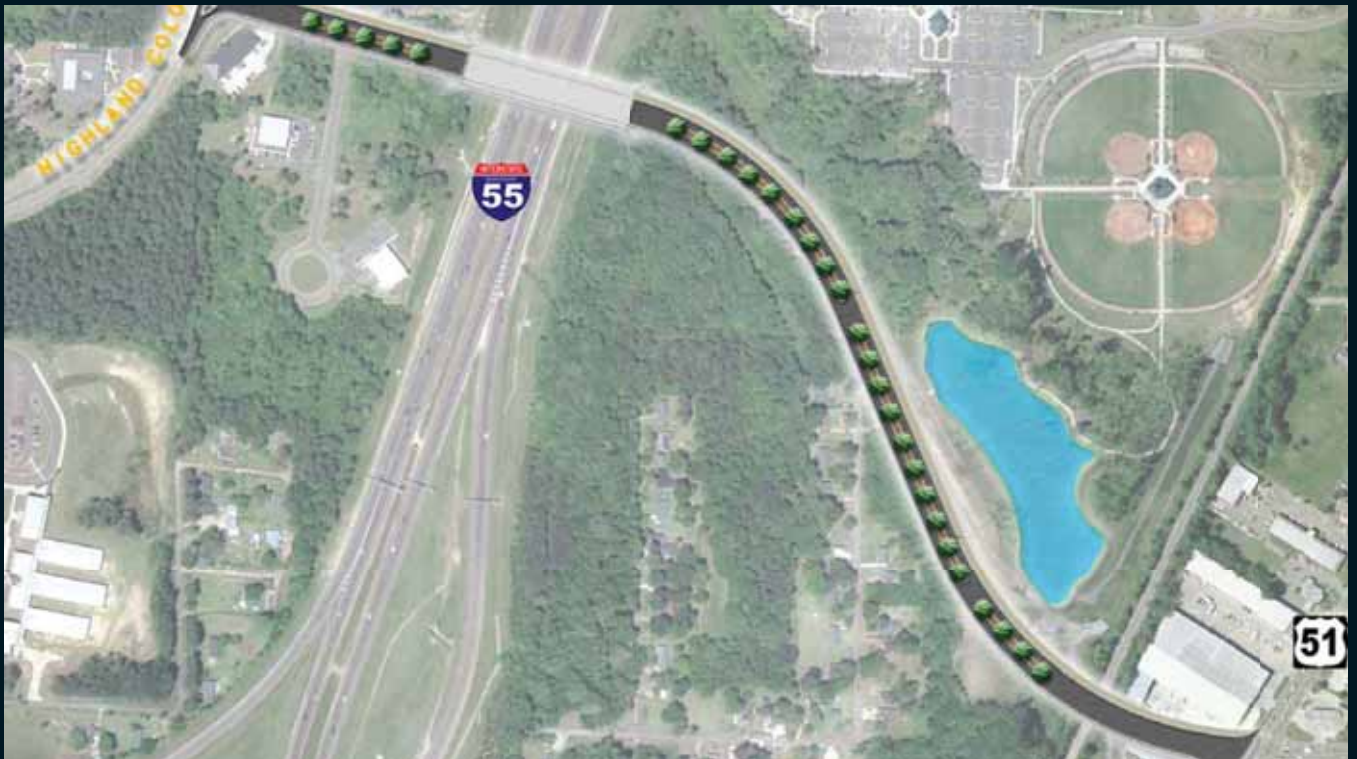
OVERVIEW: This project includes construction activities related to the extension of Lake Harbour Drive westward and across the CN railroad, the Natchez Trace, and I-55 connecting to Highland Colony Parkway.

PROBLEM: Ridgeland is trisected by three geographic barriers that impede; the safe and efficient flow of traffic, emergency service delivery, economic development, and commercial growth.

SOLUTION AND PROJECT BENEFITS: The Lake Harbour Drive project will not only solve the problems outlined, but will enhance the areas quality of life and drive the development of Freedom Ridge Park and Commerce Park.

NEED: Construction of 1.66 miles of road upgrades, interchange upgrades, new box culverts and bridges, five-lane curb and gutter cross-section with channelized intersections.

FUNDING REQUESTED: The Board of Supervisors is respectfully requesting assistance to secure funding for the Lake Harbour Drive Extension in the amount of \$5 million dollars.





Transportation

Reunion Interchange

Madison County, District 1, Supervisor Crosby

OVERVIEW: The Reunion Interchange project addresses a critical transportation need to control growing traffic and provide an interconnect between I-55 and the proposed E/W Reunion Parkway Project.

PROBLEM: High population growth is causing heavy traffic congestion and delays, and frequent traffic accidents at existing I-55 interchanges and interconnected east-west arterial transportation corridors.

SOLUTION AND PROJECT BENEFITS: The Reunion Interchange will provide an interconnection with the Reunion Parkway Project and I-55, alleviate traffic congestion, and drive economic development.

NEEDS: The Board of Supervisors has completed the environmental, design, and right-of-way phases for the project and is seeking resources to construct an efficient Single Point Urban Interchange (SPUI).

FUNDING REQUESTED: The Board of Supervisors is respectfully requesting assistance to secure funding in the amount of \$21 million in FY 2012 and \$21 million in FY 2013 for the Reunion Interchange Project.





Transportation

Hoy Road Improvements

Madison the City & Madison County, Districts 1 & 2, Supervisors Crosby & Lott

OVERVIEW: This project addresses a critical transportation need to widen and upgrade two-lane Hoy Rd. to a three-lane road extending from the intersection of Old Canton Road to Old Rice Road (Madison City Limits).

PROBLEM: High population growth and continuing residential development is causing heavy traffic congestion by commuters and school bound traffic in the east Madison area.

SOLUTION AND PROJECT BENEFITS: Widening and upgrading Hoy Rd. will provide the capacity to support residential growth and provide safe interconnects to recently improved sections of Rice Rd.

NEEDS: Construction to widen approximately 2.5 miles of Hoy Rd., tapering along N. Old Canton Rd., and improvements to the signalized intersection at Rice Rd.

FUNDING REQUESTED: The Board of Supervisors is respectfully requesting assistance to secure funding in the amount of \$10.5 million for the Hoy Rd. Improvements Project.





Transportation

Flora Truck Route

Madison County, District 4, Supervisor Banks

OVERVIEW: This project includes creating a truck route to move heavy truck traffic away from downtown Flora. The existing Livingston Vernon Road would be upgraded and utilized as the truck route.

PROBLEM: Heavy trucks headed west to Hwy. 49 must drive through Flora neighborhoods posing a danger to children in the neighborhoods and inflicting undue wear and tear on town streets.

SOLUTION AND PROJECT BENEFITS: Upgrading the existing Livingston Vernon road and routing heavy truck traffic over it will improve safety in Flora, alleviate the street damage, and save the town money.

NEEDS: Upgrade and resurface 7 miles of Livingston Vernon Road and install truck route signage.

FUNDS REQUESTED: The Madison County Board of Supervisors is respectfully requesting assistance to secure funding in the amount of \$5.2 million to create a new truck route.

**TRUCK
ROUTE**





Recreation

Northeast Madison County Recreational Park Madison County, District 5, Supervisor Griffin

OVERVIEW: The Madison County Board of Supervisors has purchased sixty-two acres of land and has begun clearing the land to be used as recreational park for the benefit of local area residents.

PROBLEM: No recreational parks exist in NE Madison County. Low income area residents must travel a minimum of 17 miles to enjoy an outdoor recreational facility. There is very little to do in this rural area.

SOLUTION AND PROJECT BENEFITS: The development of the recreational park will provide nearby and accessible recreational facilities (and health benefits) for the residents of rural NE Madison County.

NEED: Construction of pavilions, restroom facilities, wellness trails, softball fields, boat ramp, lake dam with drain, parking facilities and entranceway. Installation of playground and picnic equipment.

FUNDS REQUESTED: The Board of Supervisors is respectfully requesting funding in the amount of \$1 million dollars to develop the new NE Madison County Recreational Park.





Recreation

Highway 22 Shared Use Trail System Madison County, District 4, Supervisor Banks

OVERVIEW: The Canton/Flora Hwy. 22 trail system would consist of approximately fourteen miles of scenic shared use trails linking the City of Canton and the Town of Flora.

PROBLEM: No shared-use trail facility, as is proposed, currently exists in the Greater Jackson Area. Scenic Hwy. 22 is currently underutilized for recreational activities such as cycling, hiking and horseback riding.

SOLUTION AND PROJECT BENEFITS: Constructing a shared use trail system along Hwy. 22 will provide much needed opportunities for recreation, healthy lifestyles, and economic development and revitalization.

NEED: Widening Hwy. 22 an additional twelve feet for fourteen miles for use as a shared trail to accommodate bicycles, horses, and hikers. Trailhead facilities will also be constructed.

FUNDS REQUESTED: The Board of Supervisors is respectfully requesting funding in the amount of \$6 million dollars to construct a shared use trail system along scenic Hwy. 22 from Canton to Flora.





Economic Development

Madison County Incubator System

Madison County, Districts 4 & 5, Supervisors Banks & Griffin

OVERVIEW: Madison County Economic Development Authority (MCEDA) is taking a new proactive local approach to job creation by helping to foster entrepreneurship, research and development, and commercialization of bio-medical technologies.

SOLUTION AND PROJECT BENEFITS: MCEDA has an opportunity to grow jobs organically by constructing a countywide system of three industry specific business incubator facilities.

NEEDS: Secure funds to construct: 1) a bio-medical technology commercialization and R&D facility in Canton, 2) a retail incubator in Camden, and 3) a cottage industry incubator at Livingston Township.

FUNDS REQUESTED: MCEDA is respectfully requesting assistance to secure funding in the amount of \$ 6.5 million dollars to construct a new job-generating incubator system.



Camden



Livingston



Madison County Bio-Medical Incubator



Utilities

West Madison Utility District (WMUD) - Water Improvements Madison County, District 4, Supervisor Banks

OVERVIEW: WMUD has only one working well, one storage tank, and one inoperable reserve tank to service its large territory. There are no means to provide water during an emergency or system failure.

SOLUTION AND PROJECT BENEFITS: Grant and loan funds awarded will shore up some of the system deficiencies. WMUD seeks funding to eliminate the remaining deficiencies and allow for future growth.

NEEDS: WMUD desires to construct a new 500,000 gallon raised composite water tank, renovate and paint existing elevated storage tank, and purchase an emergency back-up generator.

FUNDS REQUESTED: WMUD is respectfully requesting assistance to secure funding in the amount of \$1.75 million to make the necessary upgrades to better serve the citizens for West Madison.





Utilities

West Madison Utility District (WMUD) - Sewer Improvements Madison County, District 4, Supervisor Banks

OVERVIEW: The (WMUD) sewer system is 30+ years old and plagued by an undersized lagoon, ground water infiltration, residual build up, low flow capacity, and backing up into manholes and houses.

SOLUTION AND BENEFITS: The WMUD seeks to employ system upgrades and to tie into Beatties Bluff treatment facility. These improvements will allow WMUD to service existing and new customers.

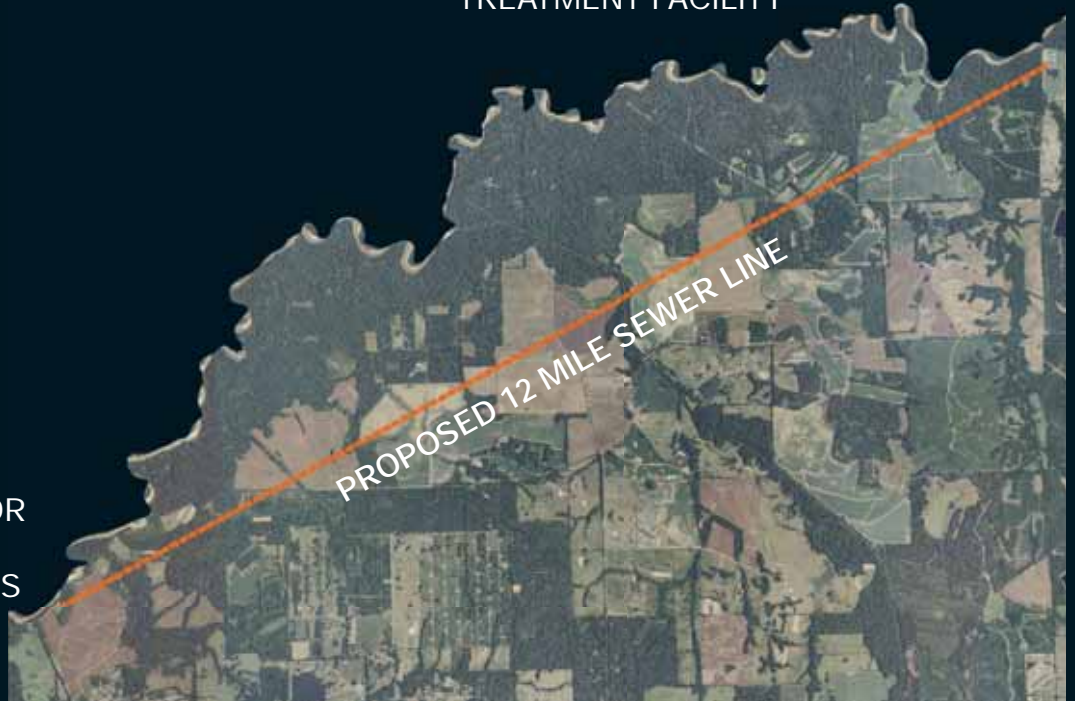
NEEDS: Construction of a large regional lift station, construct new ductile iron pipe arterial sewer line to connect to Beatties Bluff treatment plant, install a limited amount of pipe slip lining and new pipes.

FUNDS REQUESTED: WMUD is respectfully requesting assistance to secure funding in the amount of \$10.5 million to make these necessary upgrades to better serve the citizens of West Madison.



BEATTIES BLUFF WASTE-WATER
TREATMENT FACILITY

NEW WET WELL &
PUMP STATION FOR
WEST MADISON
SEWAGE LAGOONS



PROPOSED 12 MILE SEWER LINE

