



WEST POINT

MORE

JOE MAX HIGGINS, JR.

STARKVILLE

COLUMBUS

WHAT IS MORE?

Schools

Qualified Staff

Money

Taxing Entities

Sites

Housing

Recreation

Infrastructure

Map labels include: Road A, Road B, Road C, Airside Access, Future Air Cargo Facility, Future Aircraft Maintenance, Future F.B.O., Future T. Hangars, Proposed Crosswind Runway Expansion, Ultimate Runway Protection Zone, Existing End of Runway, Runway Expansion to 8000 LF, Aurora, GTR Airport Terminal, Eurocopter, Possible Adj. Runway Exp. Area, 100,000 SF, 150,000 SF, 200,000 SF, 320,000 SF, 275,000 SF, 110,000 SF, 60,000 SF, 25,000 SF, 2,000,000 SF, 827 Acres +/-, 1290 Acres +/-, Rail Loop West, Future Air Facility.

WHAT IS MORE?

Schools

Qualified Staff

Money

Taxing Entities

Sites

Housing

Recreation

Infrastructure

Map labels include: Road A, Road B, Road C, Airside Access, Future Air Cargo Facility, Future Aircraft Maintenance, Future F.B.O., Future T. Hangars, Proposed Crosswind Runway Expansion, Ultimate Runway Protection Zone, Existing End of Runway, Runway Expansion to 8000 LF, Aurora, GTR Airport Terminal, Eurocopter, Future Corporate Complex, 2,000,000 SF, 1,000,000 SF, 320,000 SF, 200,000 SF, 150,000 SF, 100,000 SF, 275,000 SF, 110,000 SF, 60,000 SF, 25,000 SF, 827 Acres +/-, 1290 Acres +/-, Approximate Location of Wetland Fingers, Rail Loop West, Possible Adj. Runway Exp. Area.

WHAT IS MORE?

Schools

Qualified Staff

Money

Taxing Entities

Sites

Housing

Recreation

Infrastructure

Map labels include: Road A, Road B, Road C, Airside Access, Future Air Cargo Facility, Future Aircraft Maintenance, Future F.B.O., Future T. Hangars, Proposed Crosswind Runway Expansion, Ultimate Runway Protection Zone, Future Corporate Complex, Future Air Facility, Existing End of Runway, Runway Expansion to 8000 LF, Aurora, GTR Airport Terminal, Eurocopter, Possible Adj. Runway Exp. Area, 100,000 SF, 150,000 SF, 200,000 SF, 320,000 SF, 275,000 SF, 110,000 SF, 60,000 SF, 25,000 SF, 2,000,000 SF, 827 Acres +/-, 1290 Acres +/-, Rail Loop West, Approximate Location of Wetland 'Fingers', and various building footprints.

WHAT IS MORE?

Schools

Qualified Staff

Money

Taxing Entities

Sites

Housing

Recreation

Infrastructure

Map labels include: Road A, Road B, Road C, Airside Access, Future Air Cargo Facility, Future Aircraft Maintenance, Future F.B.O., Future T. Hangars, Proposed Crosswind Runway Expansion, Ultimate Runway Protection Zone, Future Corporate Complex, Future Air Facility, Existing End of Runway, Runway Expansion to 8000 LF, Aurora, GTR Airport Terminal, Eurocopter, Possible Adj. Runway Exp. Area, 100,000 SF, 150,000 SF, 200,000 SF, 320,000 SF, 275,000 SF, 110,000 SF, 60,000 SF, 25,000 SF, 2,000,000 SF, 827 Acres +/-, 1290 Acres +/-, Approximate Location of Wetland 'Fingers', Rail Loop West.

[illegible][illegible][illegible][illegible]

WHAT IS MORE?

Schools

Qualified Staff

Money

Taxing Entities

Sites

Housing

Recreation

Infrastructure

Map labels include: Road A, Road B, Road C, Airside Access, Future Air Cargo Facility, Future Aircraft Maintenance, Future F.B.O., Future T. Hangars, Proposed Crosswind Runway Expansion, Ultimate Runway Protection Zone, Existing End of Runway, Runway Expansion to 8000 LF, Aurora, GTR Airport Terminal, Eurocopter, Possible Adj. Runway Exp. Area, 100,000 SF, 150,000 SF, 200,000 SF, 320,000 SF, 275,000 SF, 110,000 SF, 60,000 SF, 25,000 SF, 2,000,000 SF, 827 Acres +/-, 1290 Acres +/-, Rail Loop West, Future Air Facility.



Communiversity





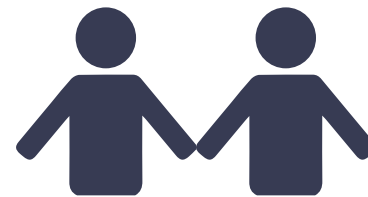
2011

Clay County approaches LINK

LINK makes proposal to Clay County

Clay County officially joins LINK
Oktibbeha County approaches LINK
Regional steering committee formed

2012



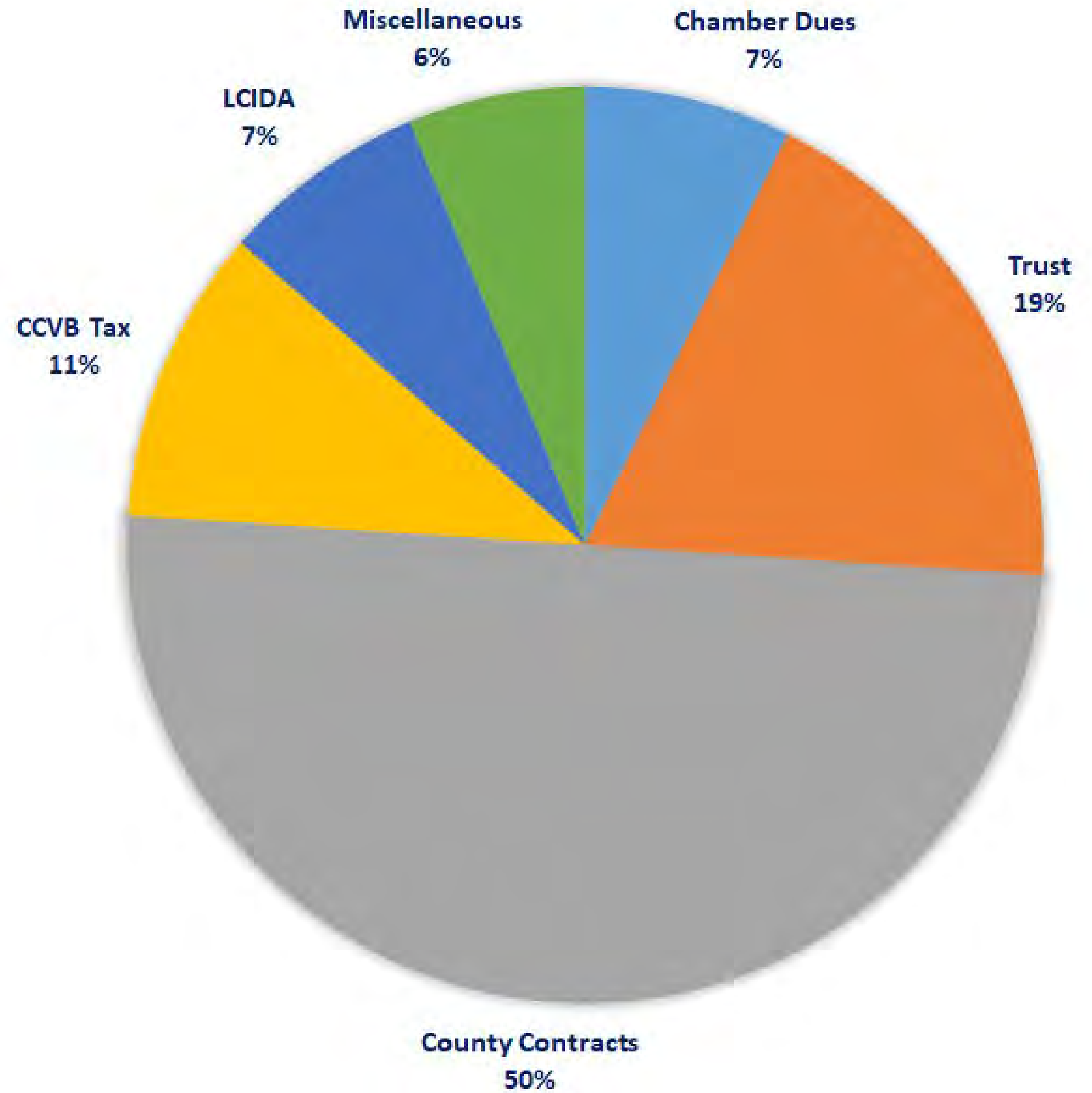
2013

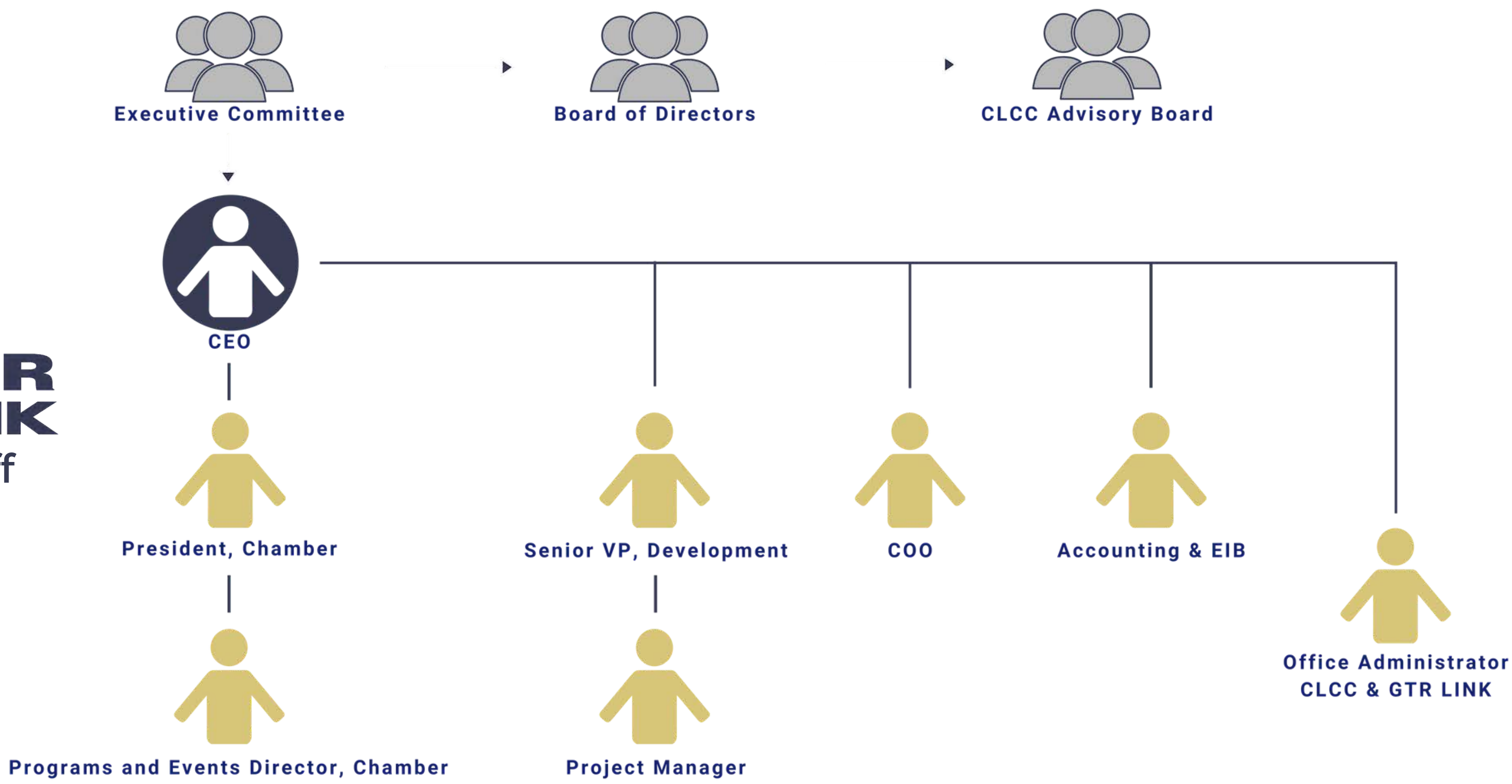
Oktibbeha County officially joins LINK

Rebranded as GTR LINK

Reworked Bylaws

Signed Funding Contracts & Interlocals





OUR PRODUCT



POLICOM METHODOLOGY

www.policom.com



2019 Metropolitan Micropolitan Economic Strength Rankings






Economic Strength
is the long-term
tendency for an
area to consistently
grow in both size
and quality.

POLICOM
CORPORATION *Economic Analysis
Everyone Understands*

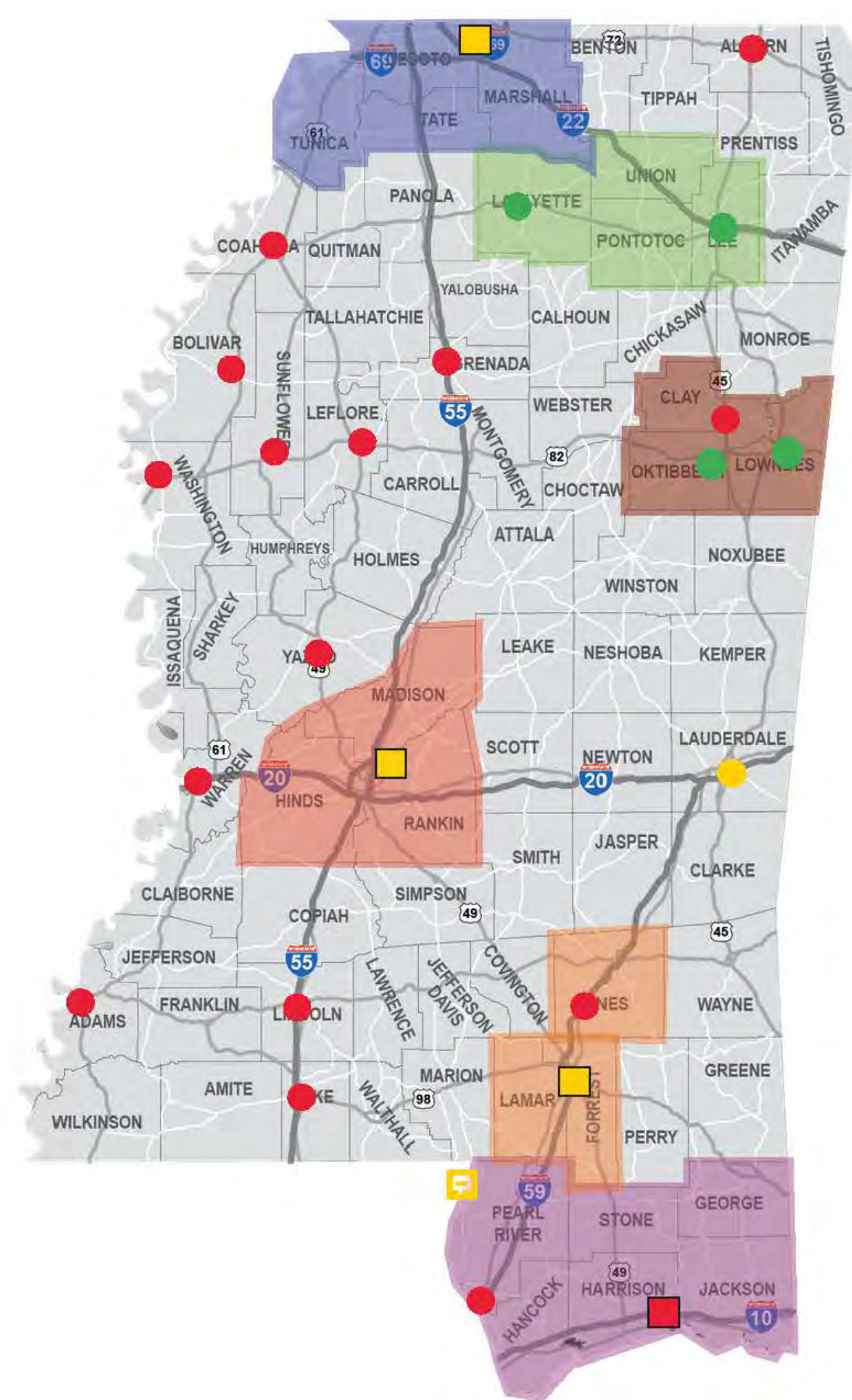
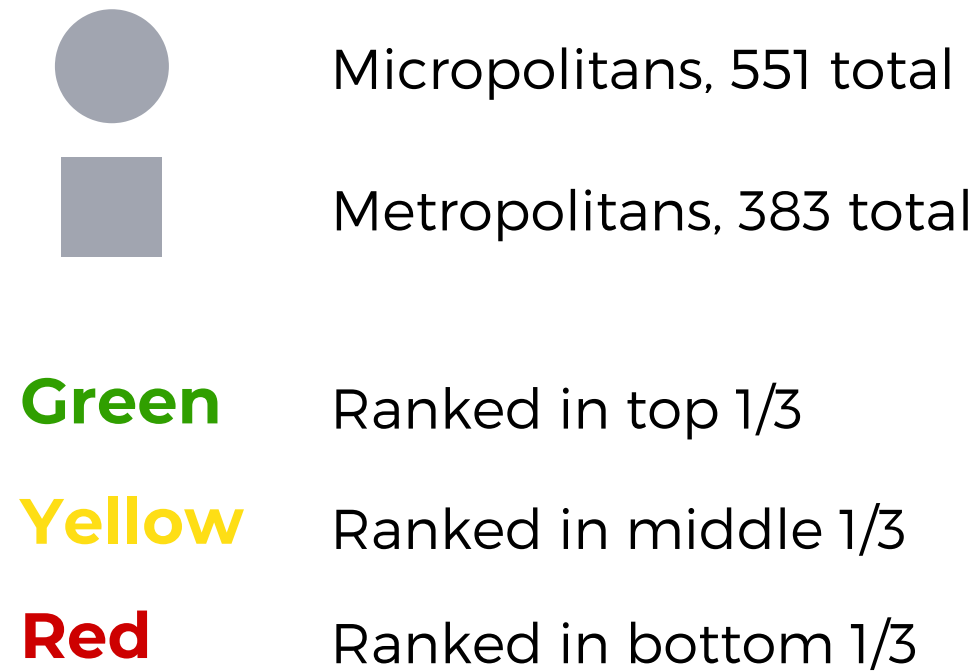
POLICOM METROPOLITANS AND MICROPOLITANS

-  Micropolitans, 551 total
-  Metropolitans, 383 total

-  Ranked in top 1/3
-  Ranked in middle 1/3
-  Ranked in bottom 1/3



POLICOM METROPOLITANS AND MICROPOLITANS



LEGISLATIVE STRENGTH

- Senate Chair
- Senate Vice Chair
- House Chair
- House Vice Chair

